

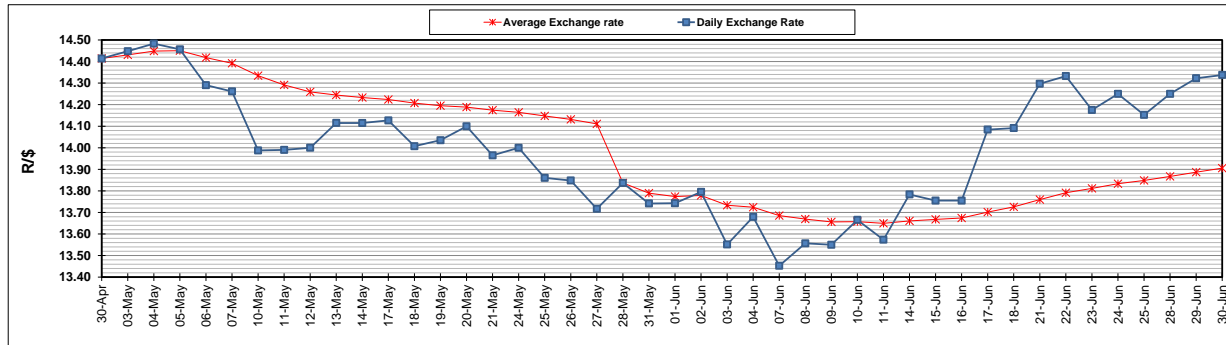
	PETROL 95 ULP	PETROL 93 ULP & LRP	DIESEL 0.05%	DIESEL 0.005%	ILL. PAR.
GAUTENG PUMP PRICE (SA c/l) AS FROM 02/06/2021	1,713.000	1,691.000	-	-	-
WHOLESALE PRICE (SA c/l) AS FROM 02/06/2021	-	-	1,466.620	1,471.020	877.488
SINGLE NATIONAL MAXIMUM RETAIL PRICE	-	-	-	-	1,102.000
BASIC FUEL PRICE - 30/06/2021 (SA c/l)	795.283	785.023	749.002	752.543	725.855
PRESS RELEASE CONTRIBUTION TO BFP 02/06/2021 - 30/06/2021 (SA c/l)	717.170	705.170	679.630	684.030	664.128
UNIT OVER/(UNDER) RECOVERY - 30/06/2021 (SA c/l)	(78.113)	(79.853)	(69.372)	(68.513)	(61.727)
AVERAGE BASIC FUEL PRICE 28/05/2021 - 30/06/2021	742.457	733.754	718.067	721.601	696.350
AVERAGE UNIT OVER/(UNDER) RECOVERY 28/05/2021 - 30/06/2021	(24.037)	(27.334)	(40.937)	(40.196)	(34.722)

ANALYSIS MOVEMENT OF AVERAGE OVER/(UNDER) RECOVERY

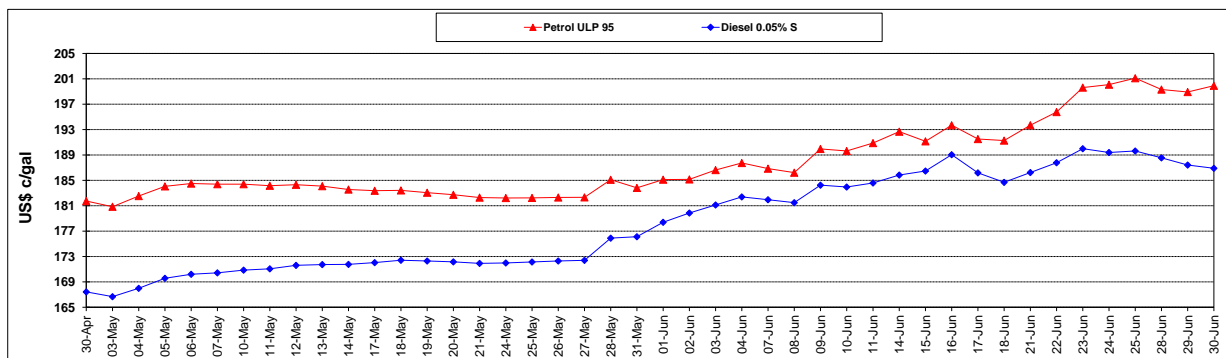
	PETROL 95	PETROL 93	DIESEL 0.05%	DIESEL 0.005%	ILL. PAR.
- MOVEMENT IN INTERNATIONAL PRODUCT PRICES	(35.015)	(38.183)	(51.554)	(50.865)	(45.018)
- MOVEMENT IN EXCHANGE RATE	10.978	10.849	10.617	10.669	10.296
AVERAGE UNIT OVER/(UNDER) RECOVERY 28/05/2021 - 30/06/2021	(24.037)	(27.334)	(40.937)	(40.196)	(34.722)

R/\$ EXCHANGE RATE - (R/\$14.3375- 30/06/2021)

EXCHANGE RATE USED IN BASIC FUEL PRICE



INTERNATIONAL PRODUCT PRICES OF BASKET USED IN BASIC FUEL PRICE



BASIC FUEL PRICE IN SA CENTS PER LITRE

